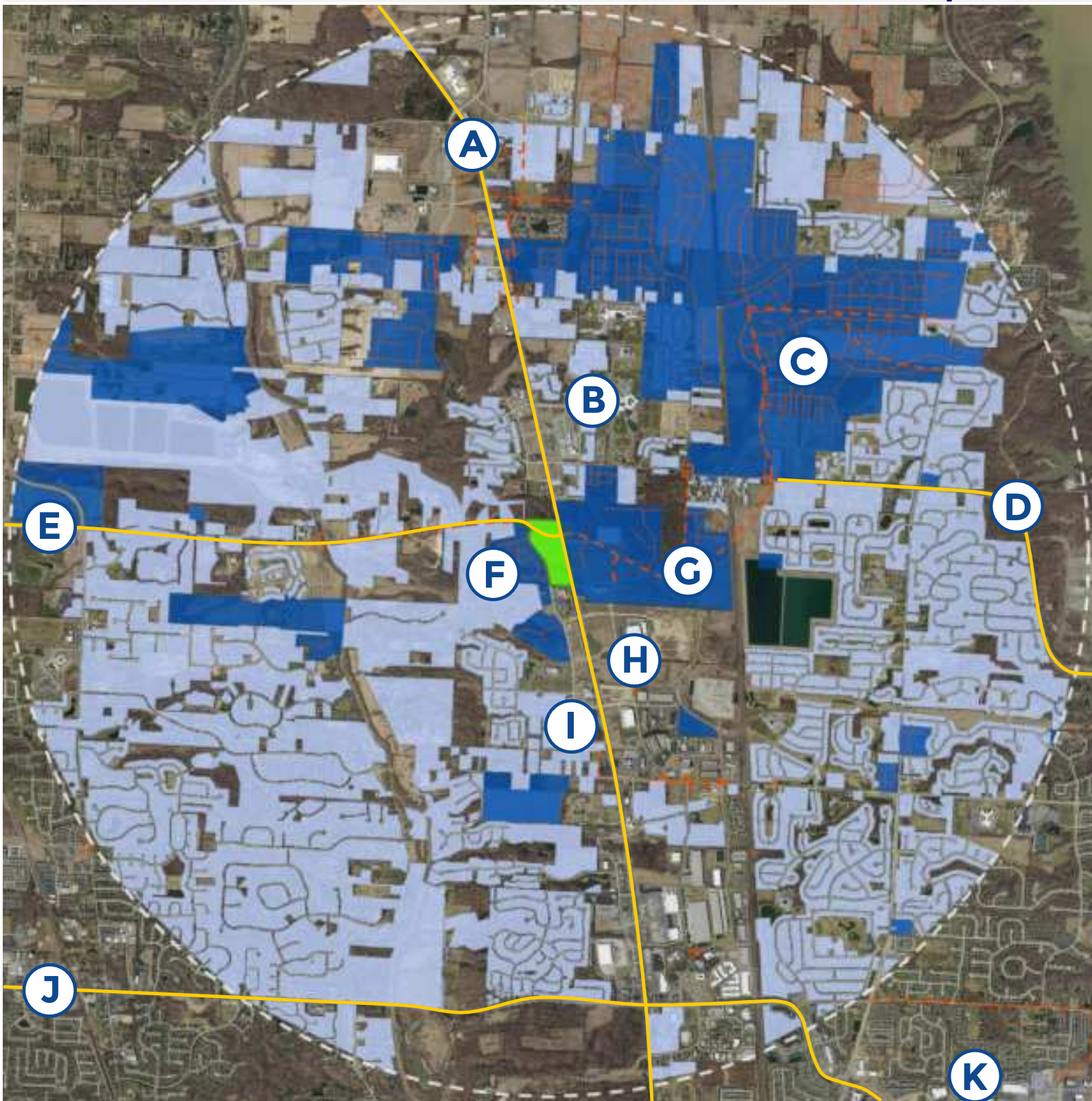


Clear Creek Commercial 27 Acre Development



3-Mile Ring (\$123,674 med. HH income): 11,654 existing households 4,995 units in development

- | | |
|--|---|
| A: US 23 | G: Slate Ridge
(1,029 units in development) |
| B: Olentangy High School and OSU Medical (Wexner) | H: Mount Carmel Health |
| C: Evans Farm / Berlin Meadows (3,908 units in development) | I: Ohio Health Lewis Center |
| D: Lewis Center Road (forthcoming I-71 interchange) | J: Powell Road / Polaris Pkwy |
| E: Home Road | K: Polaris Fashion Place |
| F: Clear Creek / North Falls / North Orange
(617 units existing, 140 in development) | |

Data from DCRPC, ESRI 2019